

Korean Course

Introduction to Jeonju University's Exchange Student Program

Jeonju University, established in 1964, is located in Jeonju, Jeollabuk-do, known as one of the most beautiful regions in South Korea. We have established sisterhood agreements with over 170 universities worldwide and strive to cultivate creative and practical talents.

Prior to the COVID-19 pandemic, over 1,600 international students from 37 countries studied at Jeonju University.

Despite a three-year hiatus caused by the pandemic, we aim to resume and rekindle our exchange programs with sister universities abroad.

Jeonju University offers not only Korean language courses for exchange students but also English language courses. For students with insufficient Korean language proficiency, we also offer a special Korean language course to help improve their skills.



Majors Available for Recruitment

<https://lrl.kr/i6c3>



Application Procedure

- 1 Document Submission: The documents can be downloaded from <https://lrl.kr/i6c3>
- 2 After completing the documents, please send them via email at jieunbok2766@jj.ac.kr
- 3 Jeonju University, Document Review
- 4 Original documents for successful applicants will be sent by the sister university.
- 5 Jeonju University will issue visa authentication.
- 6 Notification of arrival date and visa examination results.
- 7 INCHON AIRPORT PICK UP: Please share your arriving date if you arrive individually.



Duration of Study

1 semester or 1 year (for transfer students at Jeonju University).



Application Period

TOPIK level 2 or higher: from November 1 to December 15, 2023

Participating in the 92th TOPIK: ~ February 23, 2024



Eligibility Requirements

TOPIK level 2 or higher



Cost

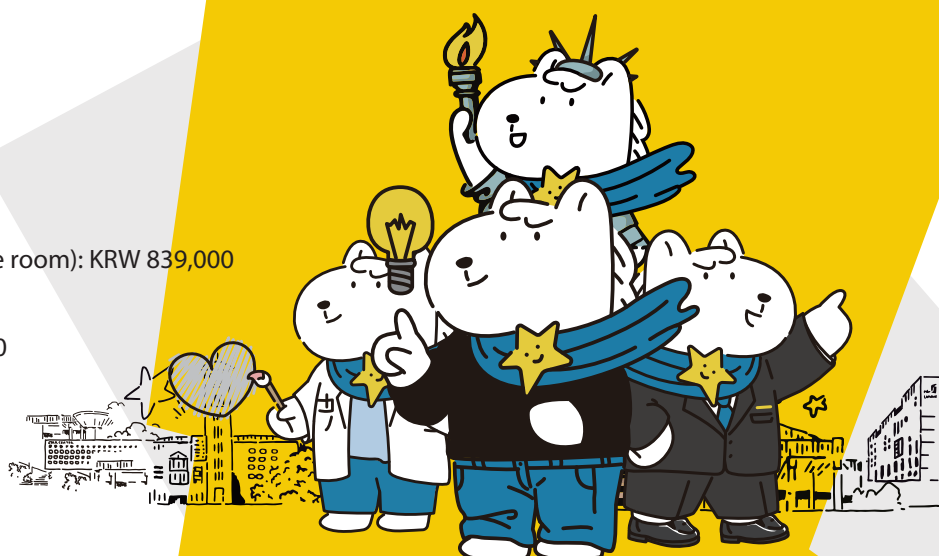
Tuition Fee: Fully waived

Dormitory Fee (16 weeks/1 semester/Double room): KRW 839,000
(approximately CNY 5,500)

Meal Expense: Monthly average of CNY 3,500

Pickup and other administrative fees
: KRW 80,000 (approximately CNY 500)

Insurance Premium
: KRW 50,000 (approximately CNY 300)



English Course

Introduction to Jeonju University's Exchange Student Program

Jeonju University, established in 1964, is located in Jeonju, Jeollabuk-do, known as one of the most beautiful regions in South Korea. We have established sisterhood agreements with over 170 universities worldwide and strive to cultivate creative and practical talents.

Prior to the COVID-19 pandemic, over 1,600 international students from 37 countries studied at Jeonju University.

Despite a three-year hiatus caused by the pandemic, we aim to resume and rekindle our exchange programs with sister universities abroad.

Jeonju University offers not only Korean language courses for exchange students but also English language courses. For students with insufficient Korean language proficiency, we also offer a special Korean language course to help improve their skills.



Majors Available for Recruitment(Dept.)

English Language and Literature, Business Administration, Art Therapy, Hotel Management

※ The educational curriculum is available for download on the URL



Application Procedure

- 1 Document Submission: The documents can be downloaded from <https://lrl.kr/i6c4>
- 2 After completing the documents, please send them via email at jeunbok2766@jj.ac.kr
- 3 Jeonju University, Document Review
- 4 Original documents for successful applicants will be sent by the sister university.
- 5 Jeonju University will issue visa authentication.
- 6 Notification of arrival date and visa examination results.
- 7 INCHON AIRPORT PICK UP: Please share your arriving date if you arrive individually.



Duration of Study

1 semester or 1 year (for transfer students at Jeonju University).



Application Period

from November 1 to December 15, 2023



Eligibility Requirements

IELTS 5.5 or higher, or iBT 71 or higher



Cost

Tuition Fee: Fully waived

Dormitory Fee (16 weeks/1 semester/Double room)
: KRW 839,000 (approximately CNY 5,500)

Meal Expense: Monthly average of CNY 3,500

Pickup and other administrative fees
: KRW 80,000 (approximately CNY 500)

Insurance Premium
: KRW 50,000 (approximately CNY 300)

